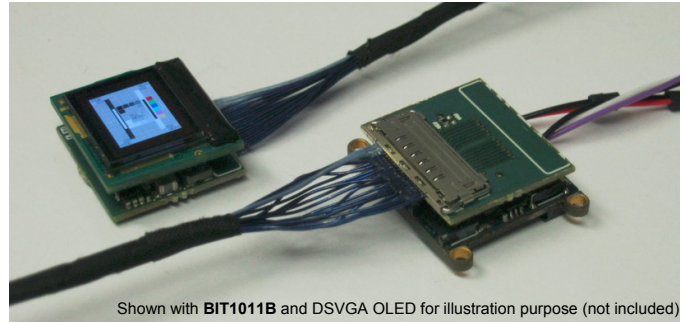


Shown with BIT1011A and DSVGA OLED for illustration purpose (not included)



Shown with BIT1011B and DSVGA OLED for illustration purpose (not included)

Features

- **Configurable for use with:**
BIT1011A & BIT1011B OLED Driver
All Variants of DSVGA OLED
- **Monocular: 1 OLED Channel**
- **Low Profile + Small Diameter Cable**
- **Preserves OLED Image Centerline**
- **Cable Clamp Mounting Holes**
BIT1011A configuration
- **Industrial Temperature Range (-40~70C)**

Applications

- **Head Mounted Displays (HMD)**
- **Wearable Devices**
- **Virtual / Augmented Reality (VR / AR)**
- **Embedded Viewers**
- **Electronic Viewfinder (EVF)**
- **Instrumentation**
- **Hobby**

General Description

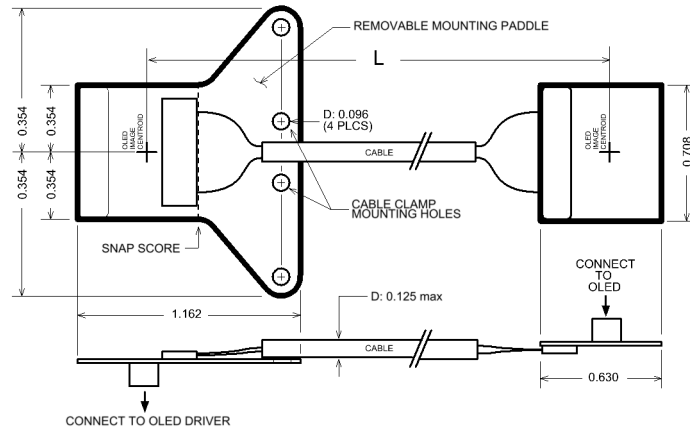
The A002-0081 is a modular high-performance low-cost 8-bit extender kit for use between the BIT1011A and BIT1011B OLED Drivers and DSVGA OLED. The OLED can be remotely located from the OLED Driver at various distances supporting a wide range of applications. The use of small diameter round cable allows unrestricted bending and flexing to adapt to mechanically complex installations.

Supported Video Modes

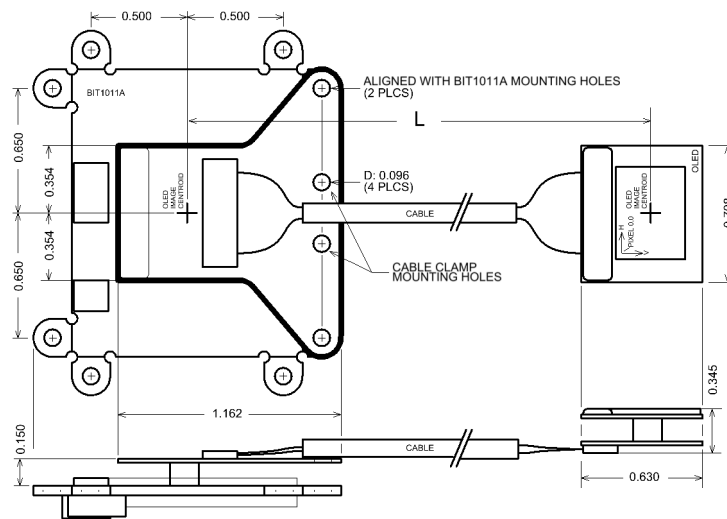
Configuration	Video Source				OLED			Displayed Image
	Analog SDV	Digital BT.656	Parallel	DVI / HDMI	Color	White	Green	
BIT1011A	n/a	n/a	n/a	VESA	✓	-	-	BW Monochrome
					-	✓	-	BW Monochrome
					-	-	✓	Green Monochrome
BIT1011B	NTSC PAL	-	-	n/a	✓	-	-	Color
					-	✓	-	BW Monochrome
					-	-	✓	Green Monochrome
	-	NTSC PAL	-	n/a	✓	-	-	Color
					-	✓	-	BW Monochrome
					-	-	✓	Green Monochrome
	-	-	VESA	n/a	✓	-	-	BW Monochrome
					-	✓	-	BW Monochrome
					-	-	✓	Green Monochrome

Package Outline

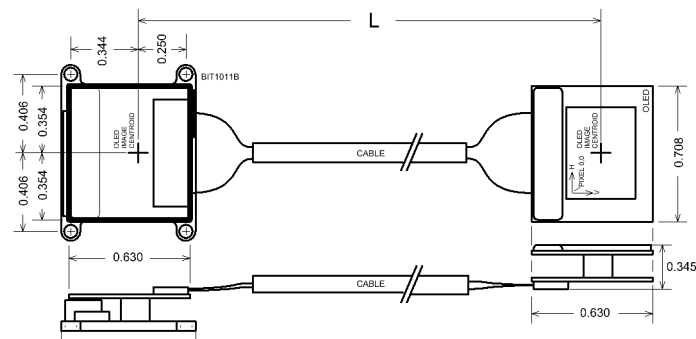
The A002-0081 is conveniently directly compatible with the BIT1011A OLED Driver and easily configured for use with the BIT1011B OLED Driver by snapping off the removable mounting paddle of the PCB at the provided v-groove score line.



A002-0081 less OLED Driver and OLED



A002-0081 w/ BIT1011A OLED Driver & OLED

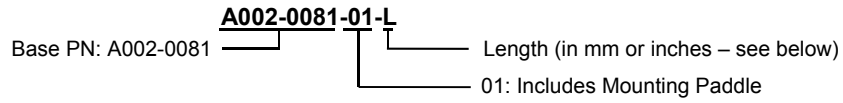


A002-0081 w/ BIT1011B OLED Driver & OLED

Notes:

1. All dimensions in inches
2. "L" = effective OLED remote distance

Orderable Part Numbers



How to specify length “L”

The extension length of the A002-0081 can be specified when ordering by adding the length “L” to the end of the part number in either millimeters or inches per the following example:

Extension length = 400mm

Part number (mm): **A002-0081-01-400mm**

Part Number (inches): **A002-0081-01-15.75in**

Revision History

Rev	Date	Description
A	03/23/20	Initial Release
B	03/24/20	Added BIT1011B photo on page 1

Contact

Bild Innovative Technology LLC
2656 W Montrose Ave Suite 203
Chicago, IL 60618
(773) 697-9345
(760) 450-6633
pbeerdeke@bildinnotech.com
www.bildinnotech.com